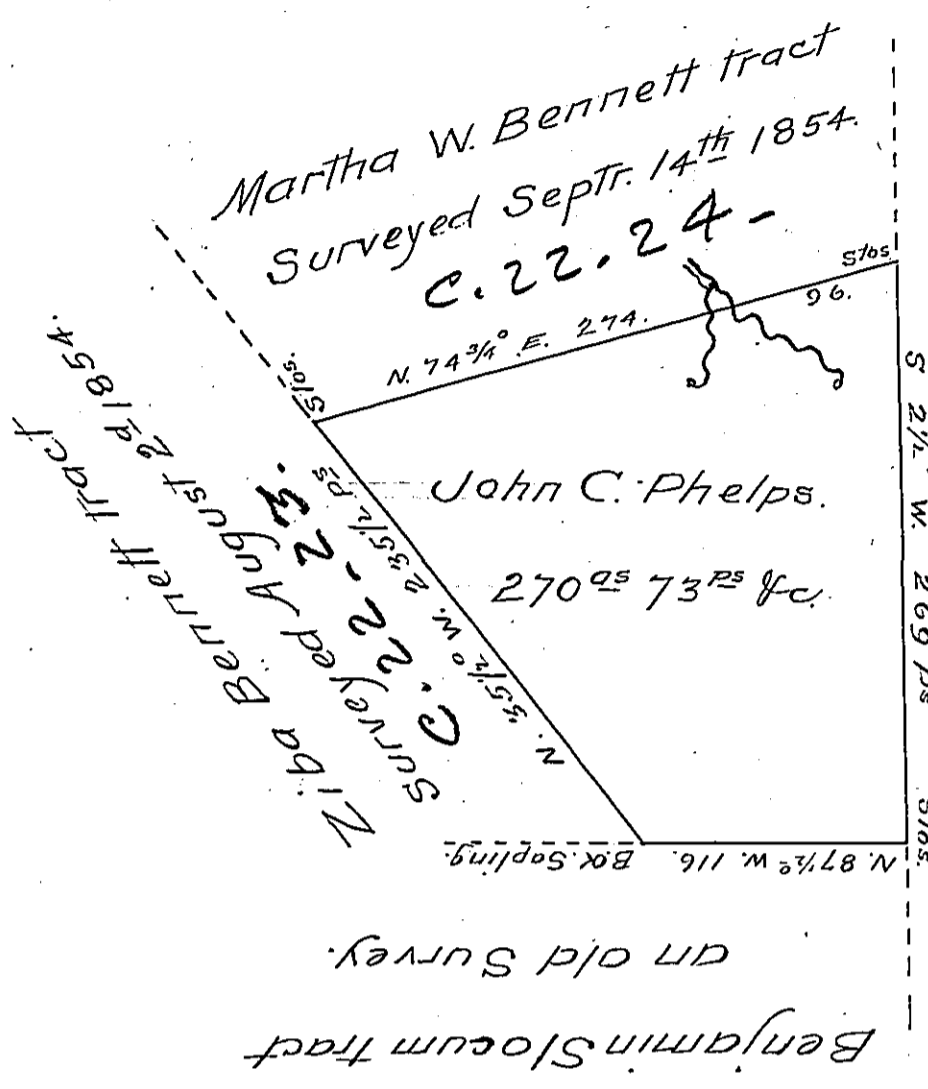


✓



Philip Cramer tract  
an old survey.

T-148.

A Draft of a tract of Land (unimproved) situate partly in Plains and partly in Jenkins townships in Luzerne County adjoining tracts Surveyed to Ziba Bennett Martha W. Bennett and others. Containing two hundred Seventy acres, Seventy three perches and allowance of Six per Cent &c. &c.

Surveyed the above described tract of land to John C. Phelps August 8<sup>th</sup> A.D. 1855 by virtue of his Warrant dated August 3<sup>d</sup> A.D. 1855.

To J. Porter Brawley Esqr. }  
S. G. }

Henry Colt D.S.

IN TESTIMONY that the above is a copy of the original remaining on file in the Department of Internal Affairs of Pennsylvania, made conformably to an Act of Assembly approved the 16th day of February, 1833, I have hereunto set my Hand and caused the Seal of said Department to be affixed at Harrisburg, this twenty second day of June 1906.

*Isaac P. Brown*  
Secretary of Internal Affairs.